



Quinti®

furniture  hive

Quinti  
rivestimenti.  
Tessuti  
espressione  
di sofisticata  
ricercatezza.

I tessuti sono il modo più semplice e sofisticato attraverso il quale tutte le nostre collezioni si esprimono. I materiali diventano linguaggio capace di trasmettere messaggi sull'identità, sul pensiero e sulla cultura attraverso motivi, colori e trame. Vestire ogni prodotto in modo esclusivo moltiplica le capacità espressive ed eleva la qualità dei prodotti rendendoli unici e ricercati.

The fabrics are the simplest and most sophisticated way through which all our collections express themselves. The materials become a language capable of transmitting messages on identity, thought and culture through patterns, colors and textures. Dressing each product in an exclusive way increases the expressive capacities and elevates the quality of the products making them unique and sophisticated.

Les tissus sont le moyen le plus simple et le plus raffiné par lequel toutes nos collections s'expriment. Les matériaux deviennent un langage pour transmettre des messages sur l'identité, la pensée et la culture à travers les motifs, les couleurs et les textures. Habiller chaque produit de manière exclusive multiplie les capacités expressives et élève la qualité des produits en les rendant uniques et recherchés.



CLUB



RUBELLI PERÙ (MUSCHIO / MOSS 05) - STRUTTURA / BASE (NERO OPACO / MATT BLACK V6)





XAXA





NEW YORK



VELLUTO / VELVET VELOURS (TABACCO / TOBACCO 707)  
STRUTTURA LEGNO ROVERE / OAK WOOD BASE (MOKA / MOKA E1)

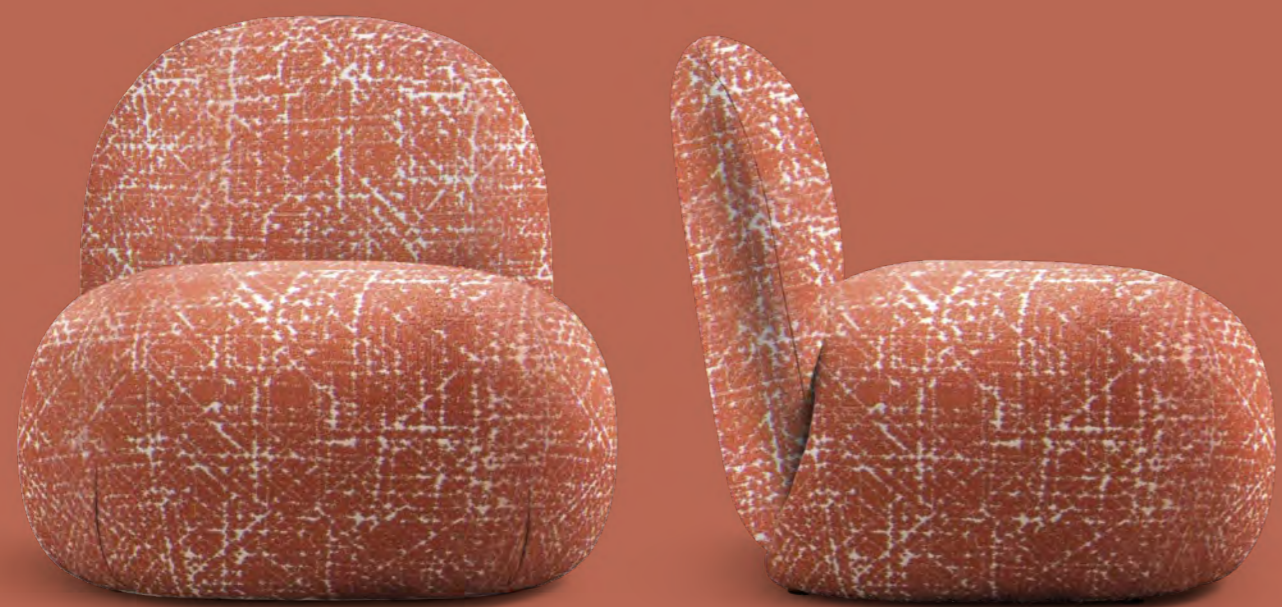
GINEVRA



RUBELLI DECONTRACTÉ (AVORIO / IVORY 07) - STRUTTURA SATINATA / SATIN BASE (INOX G7)



HILL





HILL







HILL



BOUQUET (AVORIO / IVORY 01/01)

DEEP ONE



COCON (AVORIO / IVORY R-10) - PELLE / LEATHER PREMIUM (OCRA / OCHER 308)



STRUTTURA SATINATA / SATIN BASE (ORO / GOLD G2) - PIANO MARMO CALACATTA / CALACATTA MARBLE TOP

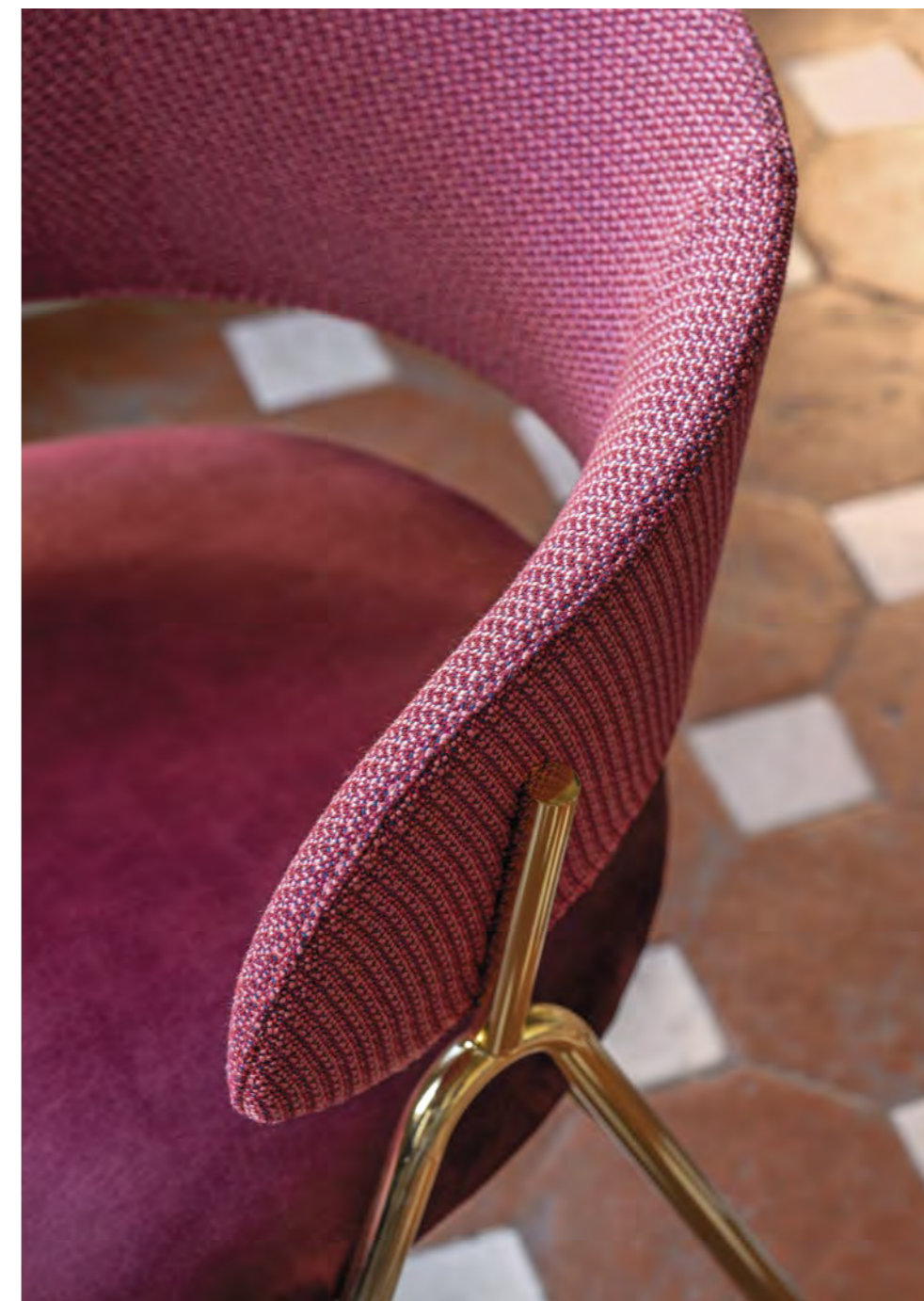


JOLLY





KEIRA



RUBELLI CROQUETTE (LAMPONE / RASPBERRY 5-13) - VELLUTO / VELVET VELOURS  
(RUBINO / RUBY RED 709) - STRUTTURA / BASE (GOLD / GOLD G2)

KEIRA

RUBELLI CROQUETTE (ASSENZIO / ABSINTHE 5-08) - VELLUTO / VELVET VELOURS  
(PETROLIO / PETROIL 711) - STRUTTURA CROMO / CHROME BASE (GOLD G2)





KEIRA



COCON (FUMO / SMOKE R20) - STRUTTURA / BASE (NERO OPACO / MATT BLACK V6)

ARWA



RUBELLI CROQUETTE (CACHI / KHAKI 5-06) - VELLUTO / VELVET VELOURS (ORO / GOLD 706)  
LEGNO ROVERE / OAK WOOD (MOKA E1) - PUNTALI GOLD SATIN / GOLD SATIN CAP







ARWA



RUBELLI CROQUETTE (BLU / BLUE 5-1 6) - VELLUTO / VELVET VELOURS (TERRA / EARTH 702)  
LEGNO ROVERE / OAK WOOD (MOKA E1) - PUNTALI GOLD SATIN / GOLD SATIN CAP





ANNA



RUBELLI PERÙ (CORALLO / CORAL 04)  
VELLUTO / VELVET VELOURS (RUBINO / RUBY RED 709)

ANNA



RUBELLI PERÙ (MUSCHIO / MOSS 05) - VELLUTO / VELVET VELOURS (AVORIO / IVORY 701)



OLGA



RUBELLI DECONTRACTÉ (CELADON 012) - STRUTTURA / BASE (GOLD V5)

RUBELLI DECONTRACTÉ (AVORIO / IVORY 007) - STRUTTURA / BASE (RAME / COPPER 5V)



RUBELLI DECONTRACTÉ (ARTICO / ARTIC 016) - BASE / BASE (NERO OPACO / MATT BLACK V6)



LEVEL





HIP



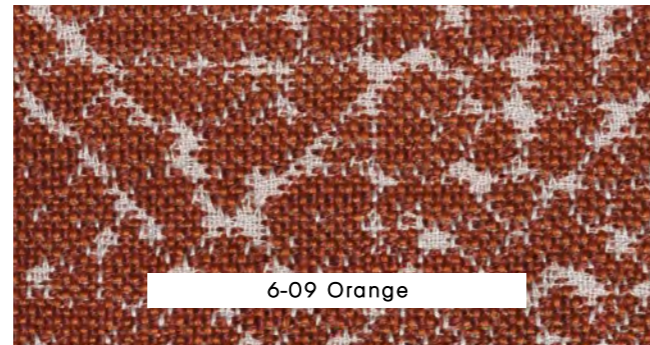
ONE RECYCLED (BOSCO / WOOD 030) - CUSCINI / CUSHIONS KVADRAT STEELCUT (VERDE / GREEN 946/S194) - STRUTTURA / BASE (NERO OPACO / MATT BLACK V6)

Diecielode - Rubelli

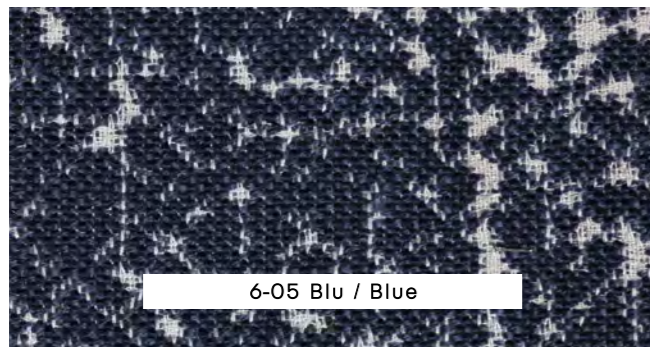
CL1 | MARTINDALE 60.000 | OUTDOOR USE



6-01 Avorio / Ivory



6-09 Orange



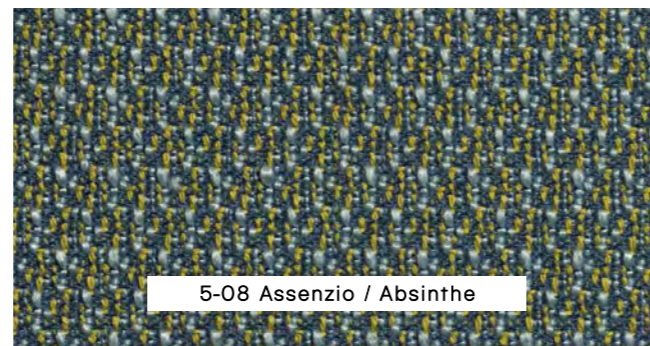
6-05 Blu / Blue

Croquette - Rubelli

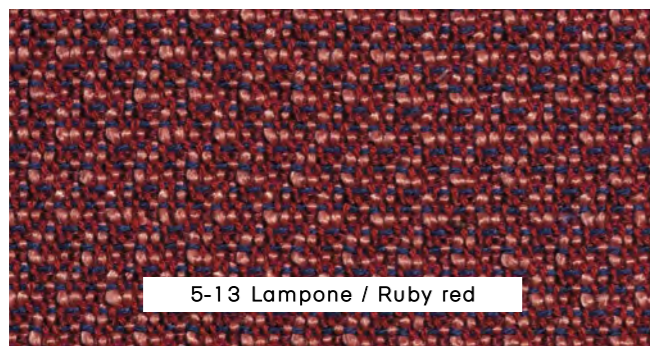
CL1 | MARTINDALE 60.000 | OUTDOOR USE



5-06 Cachi / Khaki



5-08 Assenzio / Absinthe



5-13 Lampone / Ruby red



5-16 Blue

Perù - Rubelli

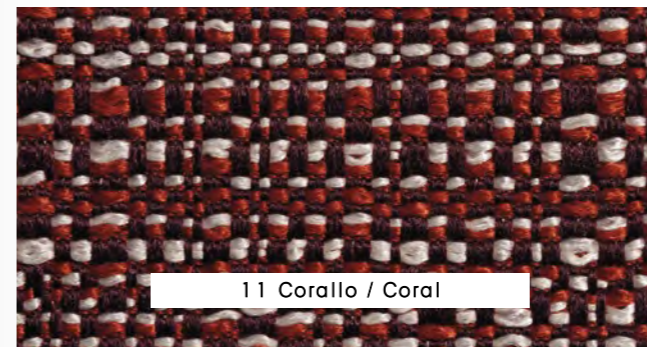
CL1 | MARTINDALE 70.000 | OUTDOOR USE



02 Paglia / Straw



07 Pesca / Peach



11 Corallo / Coral



05 Muschio / Moss

Bouquet

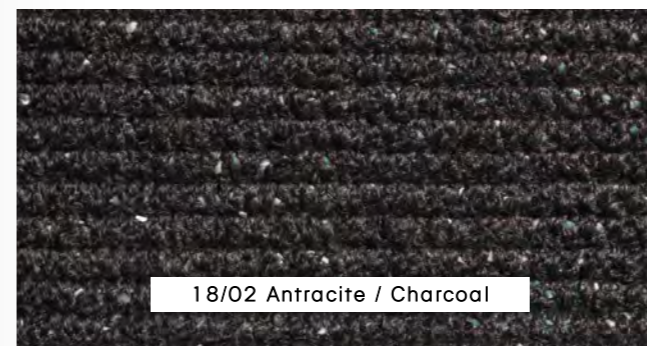
CL1 | OEKO-TEX | MARTINDALE 25.000



01/01 Avorio / Ivory



03/09 Smoke



18/02 Antracite / Charcoal



GilbertiStudio / Foto Savorelli / Stampa Grafiche Antiga

furniture  hive

[www.furniturehive.net](http://www.furniturehive.net)